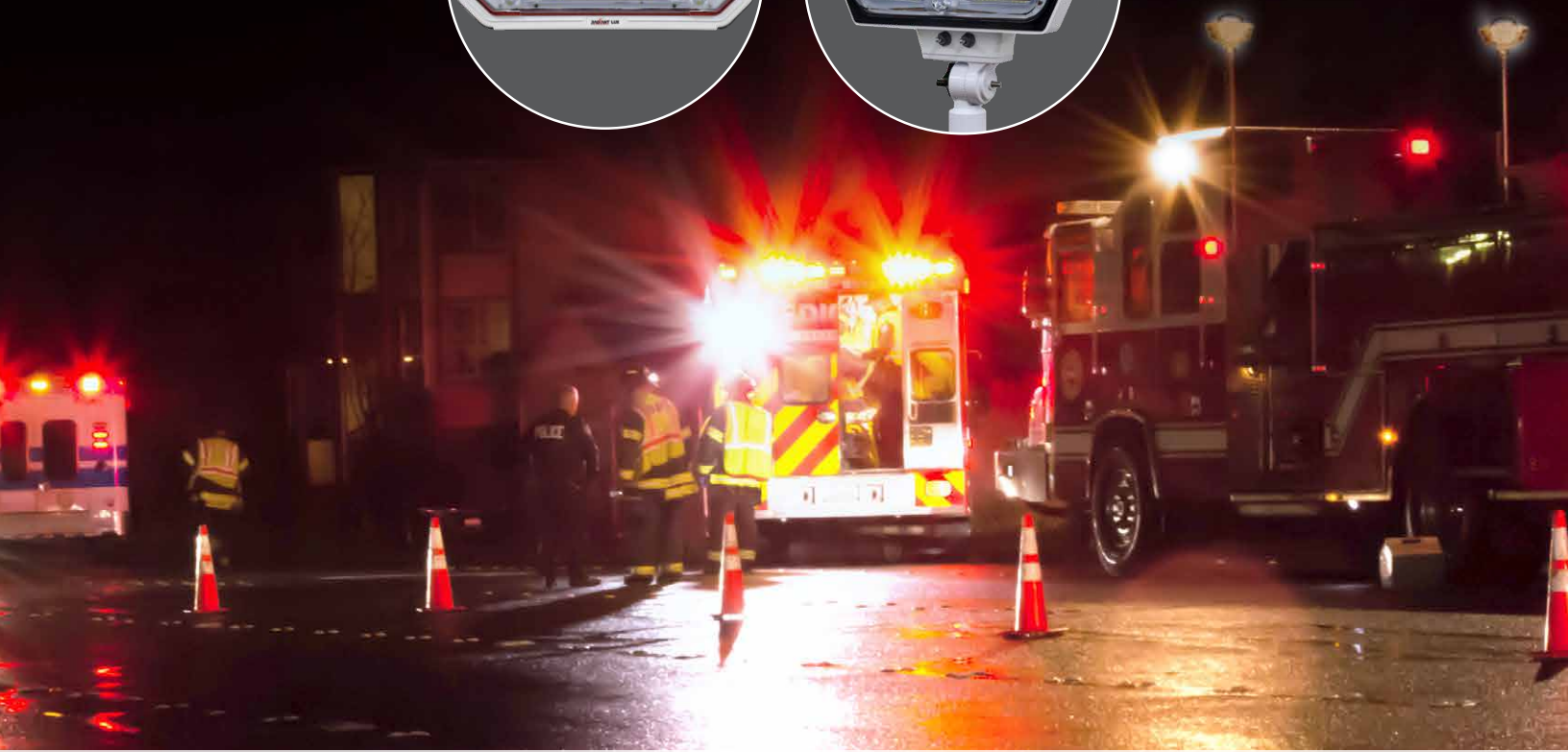


FRC

MAXIMUM VISIBILITY AT THE SCENE



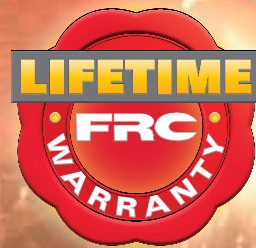
RADIANT
LUX & MAX
LED SCENE LIGHTING

SAFE  FLEET
Driving Safety Forward™

RADIANT SERIES SCENE LIGHTING

Meet the newest addition to the Safe Fleet technology platform of fire safety products; the Radiant Lux™ and Radiant Max™ LED scene light by FRC. To improve fireground safety, these flush and pole mounted scene lights incorporate the highest technology components, and engineered optic design, to direct light from each ultra-bright LED more precisely and efficiently. This places the light more evenly and where you need it – all with less power! The new flood and spot configurations are designed to provide the best scene coverage for work area and extended scene reach. The Radiant Lux and Radiant Max deliver continuous full light intensity and run for hours with no light degradation due to the all-new revolutionary heat sink and power supply designs. Controllable by traditional switching methods for standard lighting modes or CANBUS for enhanced operation including; dimming, flashing, directional and amber color options. Designed from the ground up, the new robust design incorporates the latest environment protection technology to last a lifetime in the wettest and harshest environments.

Create a safer emergency scene and equip your apparatus with the highest tech lights scene lights available - Radiant!



FRC LIFETIME WARRANTY

FRC offers a lifetime warranty for all Radiant Max and Radiant Lux products installed on fire or emergency medical services apparatus.



- Sleek new design is available with black, chrome or white bezels



- Revolutionary heat sink design keeping the LED cool and deliver full 22,000 lumens of light output at all time

16.24"
(285.7 mm)



- 10 Spot and 78 Flood directing all the light to the fire scene
- Unique high impact lens is designed to operate in a harsh environment



- Sure Grip Handle

- New asymmetrical optic design delivers the most effective light utilizing spot & flood combinations

13.75
(412.5 mm)

- New power supply and LED driver designed to provide long operating life



- Revolutionary heat sink design keeping the LED cool and deliver full 32,000 lumens of light output at all time.

RADIANT LUX SURFACE MOUNT



Specifications:

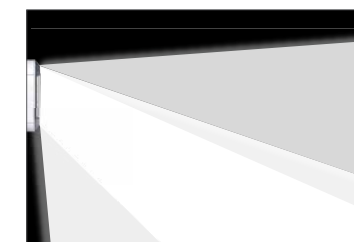
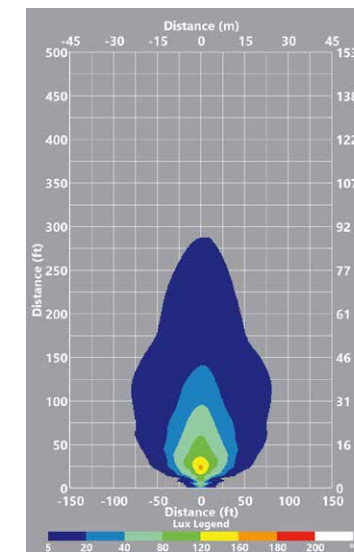
Dimensions	AC - 16.24 (412.5 mm) wide x 3.7 (93.98 mm) deep x 6.375 (161.93) high (with surface cut out) DC - 16.24 (412.5 mm) wide x 2.2 (55.8 mm) deep x 6.375 (161.93 mm) high (no surface cut out)
Weight	AC - 7.5 lbs. (3.4 kg) DC - 7.0 lbs (3.1 kg)
Lumens	22,000 Lumens
Color Temperature	6500 Kelvin (Daylight)
LED Distribution	10 Spot LEDs and 56 Flood LEDs Optional 28 Amber LEDs - Flash or directionally control lights for warning alerts
Voltage	12/24V DC (10A Max./5A Max.) or 120/240V AC (1.0A Max/0.5A Max.)
Power	150W
Environment Protection	IP68
Max. Operating Ambient Temperature	115° F (45°C) without any deration of light output.
Controller	Available with or without CANBUS

Delivering an ultra bright 22,000 lumens, the Radiant Lux is the brightest surface mount light on the market!

FEATURES



- New sleek and rugged design is available with black, chrome or white bezels
- Power options include 12/24VDC and 120/240VAC
- Standard switch control or optional CANBUS for increased functionality
- CANBUS controllable:
 - ◆ Create patterns using multiple lights with a choice of white and amber light color
 - ◆ Turn on & off each light's amber color, on multiple apparatus lights, creating a directional pattern for traffic
 - ◆ Rapidly flash the amber to create a warning signal
 - ◆ Additional lights to accomplish this are no longer required
- ◆ Dimmable
 - ◆ Tune the brightness to create the most effective light for any scenario
 - ◆ Control power consumption of the light if needed
- ◆ Spot, Flood and Amber light sections can be controlled individually
- ◆ Isolate light sections and control for specific applications:
 - ◆ Spot only for penetrating light without the flood on
 - ◆ Flood only for ground light
 - ◆ Amber only for traffic warning, extreme smoke or snow bright white is too reflective Functions mixed and matched



FRC's Innovative Asymmetrical Pattern

Engineered to illuminate work area while providing extreme pattern reach.



■ 10 Spot LEDs and 56 Flood LEDs with Optional 28 Amber LEDs for warning alerts

■ New asymmetrical optic design delivers the most effective light to the immediate work area and extended scene reach

RADIANT MAX POLE MOUNT



Casting a immense 32,000 lumens and requiring only 220 watts, the Radiant Max is the most efficient and brightest pole mount LED scene light on the market!

FEATURES



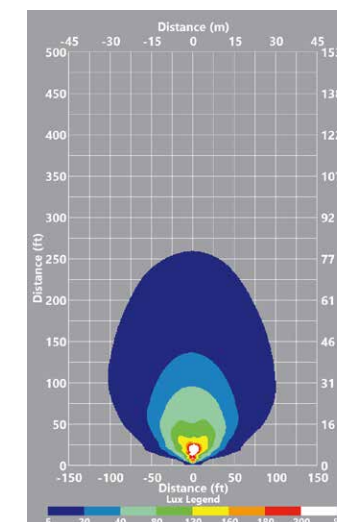
- New asymmetrical optic design delivers the most effective light utilizing spot & flood combinations
- Available on FRC Pole, Tripod and Fixed Mounts
- FRC "Sure Grip Handle"
- Power options include 12/24VDC and 120/240VAC
- New redesigned switch box and robust arm and swivel
- Standard switch control or optional CANBUS for increased functionality.
- ◆ Switch Control
 - ◆ Switch box option is available to be used as a standalone or to serve as an additional control on top of the CANBUS
 - ◆ Provides toggling brightness, mode (flood + spot, Flood only, and Spot only), and ON/OFF

- ◆ CANBUS Control
 - ◆ Dimmable
 - ◆ Tune the brightness for any scenario
 - ◆ Adjust power consumption if needed
 - ◆ Spot and Flood sections can be controlled individually
 - ◆ Isolate light sections and control for specific applications:
 - ◆ Spot only for penetrating light without the flood
 - ◆ Flood only for ground light
 - ◆ Flood + spot for best overall scene coverage

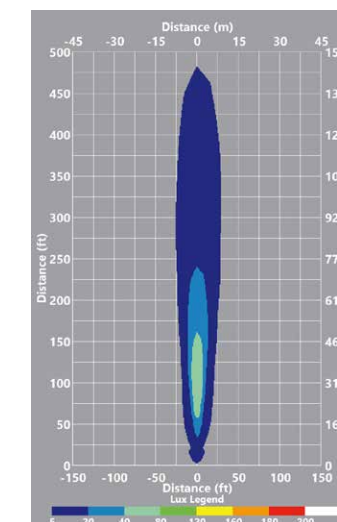


Specifications:

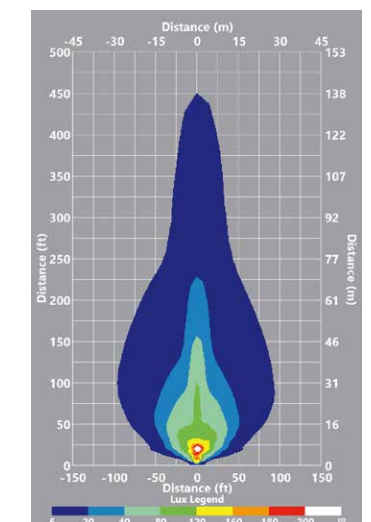
Dimensions	13.75" (349.25 mm) wide x 3.75" (95.25 mm) deep x 7.5" (190.5 mm) high
Weight	AC - with arm & swivel 8.9 lbs (4 kg) DC - with arm & swivel 7.9 lbs (3.6 kg)
Lumens	32,000 Lumens
Color Temperature	6500 Kelvin (Daylight)
Voltage	120/240VAC and 12/24VDC
LED Distribution	10 Spot and 78 Flood
Power	220W
Environment Protection	IP68
Max. Operating Ambient Temperature	115° F (45° C) without any deration of light output.
Controller	Available with or without CANBUS



Radiant Max 100% flood 0% spot



Radiant Max 0% flood 100% spot



Radiant Max flood + spot mix (default mode)

MOUNTING OPTIONS



RDB600 Full tripod



570 Fixed Top Mount



KR-700 Portable Base



Pole Mount
For mounting on all FRC Twistlock telescopic poles models 510, 512, 530, 540 and 542

RDB656 Medium tripod

RDB642 Small tripod

580 Fixed Side Mount



FRC

04172023

Copyright ©2023 Safe Fleet and its subsidiaries. All rights reserved. No part of this publication may be reproduced by any means without written permission from Safe Fleet. The information in this publication is believed to be accurate. However, Safe Fleet does not make any representation or warranty to that effect and does not assume responsibility for any consequences resulting from use of such information. Revisions or new editions of the publication may be issued (or not issued) in our discretion to incorporate such changes.

www.fireresearch.com

+1 631.724.8888

frc.sales@safefleet.net

SAFE  FLEET
Driving Safety Forward™